



**Norfolk** County Council

## Norfolk Minerals and Waste Local Plan

### Adoption Policies Map



**Published 2025**

Planning Services  
Norfolk County Council  
County Hall, Martineau Lane, Norwich, Norfolk, NR1 2DH

[www.norfolk.gov.uk](http://www.norfolk.gov.uk)



If you need a copy of this document in large print, audio, Braille, an alternative format or in a different language please contact Norfolk County Council on 0344 800 8020 or 18011 0344 8020 (textphone) and we will do our best to help.

## Contents

Introduction	page A4
Data Sources	page A7
Inset Maps layout	page A9
Insets 1 - 26 Mineral Safeguarding Areas	page A10
Insets 1 – 26 Policies	page B3
Mineral specific site allocation insets	page B30
Insets 1 - 26 Flood maps	page C4
County Geodiversity Sites insets 27-33	page C31
Air Quality Management Areas Insets 34-36	page C39
Aerodrome Safeguarding Legend and Insets 37-38	page C42

### OS Map – Copyright note

Any maps within this document, or supporting evidence, are reproduced from Ordnance Survey Material with the permission of Ordnance Survey © Crown copyright [and database rights] [2025] OS AC0000851272. Use of this data is subject to terms and conditions.

You are granted a non-exclusive, royalty free, revocable licence solely to view the Licences Data for non-commercial purposes for the period during which Norfolk County Council makes it available. You are not permitted to copy, sub-license, distribute, sell or otherwise make available the Licensed Data to third parties in any form. Third part rights to enforce the terms of this licence shall be reserved to OS.

© Norfolk County Council [2025]

Licence No. 2007/ 063 British Geological Survey © NERC. All rights reserved

## Introduction

This set of maps is an accompaniment to the Norfolk Minerals and Waste Local Plan (NM&WLP) and is designed to act as a visual aid in the interpretation of the policies therein.

### Policies Map layout

This Policies Map has been segregated into three sets of 26 insets to allow for easier viewing:

- The first set covers all spatial information related to policies, with the exception of Mineral Safeguarding Areas and Flood Risk
- The second set of 26 inset maps covers Mineral Safeguarding Areas
- The third set of 26 inset maps covers flood risk.

The airport safeguarding maps have been separated out into a further two inset maps as its large features make it more suited to separate presentation.

The Air Quality Management Areas (AQMAs) and Local Geodiversity Sites (sometimes known as Regionally Important Geological Sites-(RIGS)) have been shown on seven further inset maps as their small scale made this necessary for the sake of clarity.

The mineral specific site allocations are shown on 15 inset maps.

### Policies Map spatial information

Most of the mapped spatial information within this Policies Map has been produced by other organisations, including the Environment Agency, Natural England and Historic England, as listed in the data sources on page 7 of this document and are relevant to many of the policies within the NM&WLP. It should be noted that this Policies Map contains the correct spatial information as at the end of 2024. However, the spatial information provided by these organisations is regularly updated and revised and therefore applicants and consultees should contact the relevant organisation to access the most up to date data.

The Policies Map also contains layers that have been mapped by Norfolk County Council, as the Minerals and Waste Planning Authority, specifically for the following policies within the NM&WLP:

#### **Policy MP5: Core River Valleys**

The Core River Valleys are shown on the Policies Map using the Core River Valleys layer.

#### **Policy WP17: Safeguarding waste management facilities**

The safeguarded waste management facilities and associated consultation areas are shown on the Policies Map as the following layers:

- Safeguarded existing waste management sites
- Consultation area for safeguarded waste management sites – existing
- Safeguarded key Water Recycling Centres
- Consultation area for safeguarded key WRCs – existing



### **Policy MP10: Safeguarding of port and rail facilities, and facilities for the manufacture of concrete, asphalt and recycled materials**

The safeguarded port and rail facilities and associated consultation areas are shown on the Policies Map as the following layers:

- Safeguarded existing mineral infrastructure
- Consultation area for safeguarded mineral infrastructure – existing

### **Policy MP11: Mineral safeguarding areas and mineral consultation areas**

The safeguarded mineral resources are shown on the Policies Map as the following layers:

- Mineral safeguarding area (sand and gravel)
- Mineral safeguarding area (silica sand)
- Mineral safeguarding area (Carstone)

The mineral extraction sites safeguarded by Policy MP11, and the associated consultation areas are shown on the Policies Map as the following layers:

- Safeguarded mineral extraction sites
- Consultation area for safeguarded mineral extraction sites – existing

The allocated mineral extraction sites safeguarded by Policy MP11 and the associated consultation areas are shown on the Policies Map as the following layers:

- Mineral site allocations
- Mineral allocation consultation area

### **Mineral Specific Site Allocation Policies**

The allocated specific sites for mineral extraction are shown on the Policies Map as the following layers:

- Mineral site allocations
- Mineral allocation consultation area
- Indicative site screening (for mineral site allocations)
- Indicative site buffers (for mineral site allocations)

### **Safeguarded minerals and waste sites information**

A list of safeguarded existing minerals and waste sites will be available from the Norfolk County Council website at [www.norfolk.gov.uk/nmwdf](http://www.norfolk.gov.uk/nmwdf), and selecting 'Annual Monitoring Reports'. The list will be annually updated as part of the monitoring process.

It should be recognised that the existing sites shown in this Policies Map are correct at the time of printing; however, the status of these sites and the area which they cover can vary over time, as the result of subsequent planning permissions etc. As the Policies Map is required to cover the

whole of Norfolk, and while every effort has been made to ensure clarity to show the overall spatial interaction between policies, it is recognised that limitations exist for identifying existing site boundaries. Therefore, it is advised that the online interactive version of the Policies Map should be consulted for to view more detailed maps of the boundaries of safeguarded sites and consultation areas in relation to Policies MP10, MP11 and WP17. The online interactive version of the Policies Map allows users to view the Policies Map at far greater levels of detail and allows particular layers of information to be selected and viewed.

The online Policies map can be viewed by following the link at: [www.norfolk.gov.uk/nmwdf](http://www.norfolk.gov.uk/nmwdf)

### **Changes to the Policies Map**

The following changes have been made to the previously adopted Policies Map (2017) as a result of the adoption of the Norfolk Minerals and Waste Local Plan in 2025:

- The removal of the previously adopted Areas of Search (AOS E, AOS F, AOS I, AOS J) has resulted in changes to the following main Policies Map Insets: 2, 3, 7, and 8.
- The removal of all previously adopted Waste Site Specific Allocations inset maps, to reflect the de-allocation of all waste site allocations and their replacement by criteria-based waste management policies.
- New mineral site allocation inset maps to reflect the de-allocation of previously adopted mineral site allocations, and the allocation of new mineral sites in the Norfolk Minerals and Waste Local Plan.
- A third set of Policies map insets-Flood risk has been included, showing the areas covered by Environment Agency Flood zones 3 and 2; and Surface water flooding for the 1 in 1000, 1 in 100 and 1 in 30-year flood events. Flood zones have therefore been removed from the policies inset maps; this change has been made to increase the legibility of both sets of inset maps. For mineral site allocations maps, a small inset map has been included to show these flood risk designations. Environment Agency flood zone 2 has not been shown as all mineral allocations in the Local Plan are within the less vulnerable, or water compatible categories for which Environment Agency flood zone 2 is not a constraint.

The following maps have also been revised to keep the Policies Map as up-to-date as possible:

- Airport Safeguarding legend and Insets 34-35 (to take into account changes to the number of safeguarded facilities and the way the Defence Infrastructure Organisation categorise development)

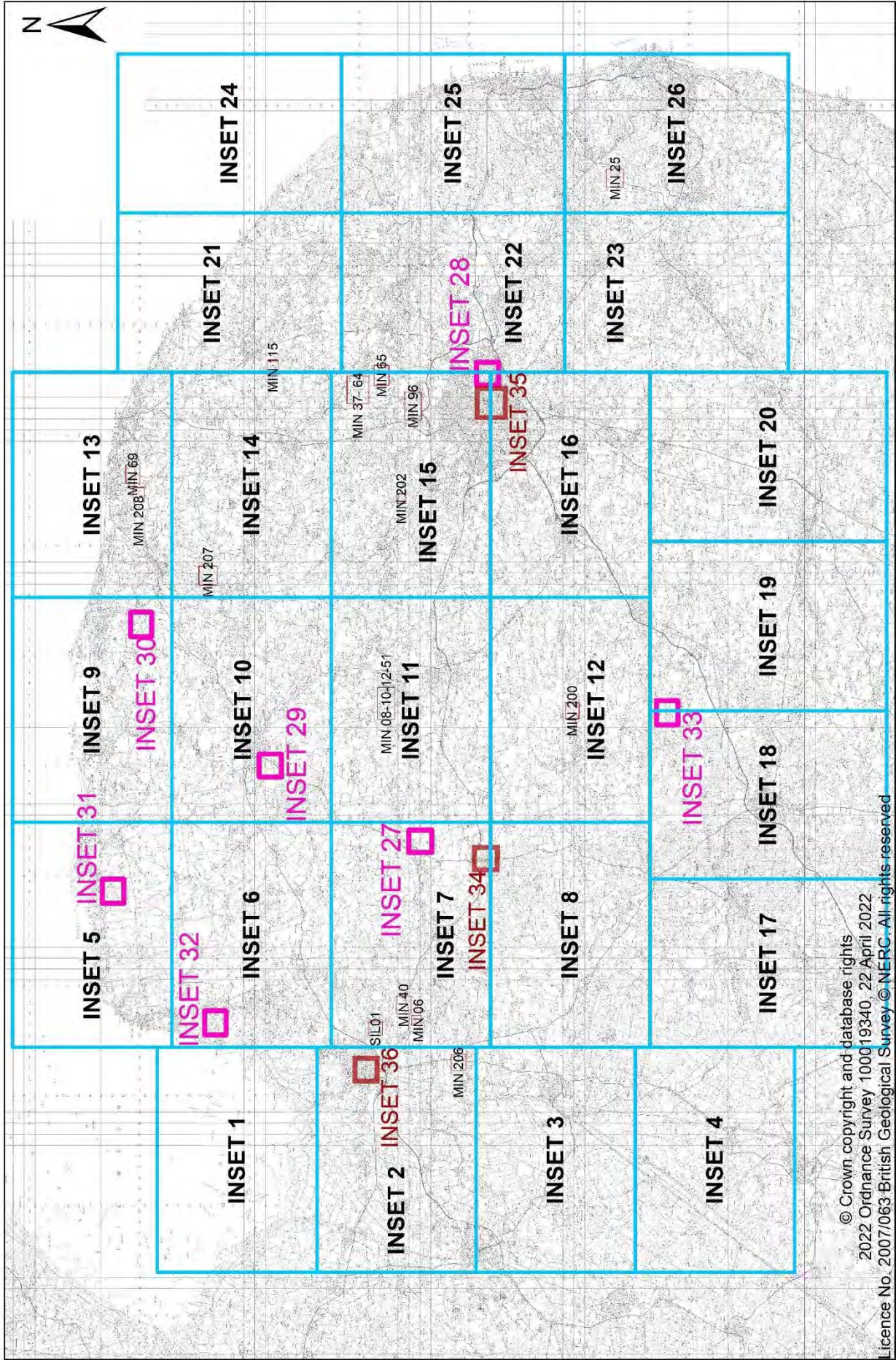
The Policies Map will be revised whenever a new minerals or waste development plan document is adopted and will reflect the up-to-date planning strategy in Norfolk.

## Changes from adopted Policies Map (2017) and Data Sources

<b>Data source</b>	<b>Data set</b>	<b>Change from adopted Policies Map (2017)</b>
Breckland Council	Stone Curlew Protection Zones	No change to Stone Curlew Protection Zone, but Stone Curlew Mitigation Zones and 'grid cells with less than 50% coverage' have been deleted.
Broads Authority	Broads Authority Executive Area	No change
Environment Agency	Flood zones 2 & 3	Updated to latest data (December 2022)
Environment Agency	Surface water flood zones (1 in 1000, 1 in 100 and 1 in 30 chance)	Updated to latest data (December 2022)
Historic England	Listed Buildings	Updated to latest data (December 2024)
Historic England	Registered Historic Parks and Gardens	Updated to latest data (December 2024)
Historic England	Scheduled Monuments	Updated to latest data (December 2024)
Local Planning Authorities	Conservation Areas	Updated to latest data (December 2024)
Local Planning Authorities	Air Quality Management Areas	Updated to latest data (December 2024)
Natural England	Ancient Woodland	Updated to latest data (December 2024)
Natural England	Area of Outstanding Natural Beauty / National Landscape	No change
Natural England	Local Nature Reserves	Updated to latest data (December 2024)
Natural England	National Nature Reserves (NNR)	Updated to latest data (December 2024)
Natural England	North Norfolk Heritage Coast	No change
Natural England	Ramsar Sites	Updated to latest data (December 2024)
Natural England	Site of Special Scientific Interest (SSSI)	Updated to latest data (December 2024)
Natural England	Special Area of Conservation (SAC)	Updated to latest data (December 2024)
Natural England	Special Protection Area (SPA)	Updated to latest data (December 2024)
Norfolk County Council	Core River Valleys	No change
Norfolk County Council	County Wildlife Sites	Updated to latest data (December 2024)

<b>Data source</b>	<b>Data set</b>	<b>Change from adopted Policies Map (2017)</b>
Norfolk County Council	Designated lorry routes in Norfolk	Updated to latest data (December 2024)
Norfolk County Council	Green infrastructure corridor	New layer on the Policies Map
Norfolk County Council	Mineral Safeguarding Area (Carstone)	No change, latest data used (December 2024)
Norfolk County Council	Mineral Safeguarding Area (sand and gravel)	Updated on revised selection of geological deposits for safeguarding (April 2018)
Norfolk County Council	Mineral Safeguarding Area (Silica sand)	Minor change to resource area in Roydon, latest data used (December 2024)
Norfolk County Council	Mineral site allocations Indicative site screening and site buffers for mineral site allocations	Updated in accordance with new specific site allocation policies
Norfolk County Council	Public Rights of Way (PROW)	Updated to latest data (December 2024). Only shown on site allocations inset maps.
Norfolk County Council	Safeguarded existing mineral sites and associated consultation area	Updated to latest data (December 2024).
Norfolk County Council	Safeguarded existing waste management sites and associated consultation area	Updated to latest data (December 2024)
Norfolk County Council	Safeguarded key water recycling centres and associated consultation area	Updated to latest data (December 2024)
Norfolk County Council	Safeguarded existing mineral infrastructure and associated consultation area	Updated to latest data (December 2024)
Norfolk Geodiversity Partnership	County Geodiversity Sites	Updated to latest data (December 2024)










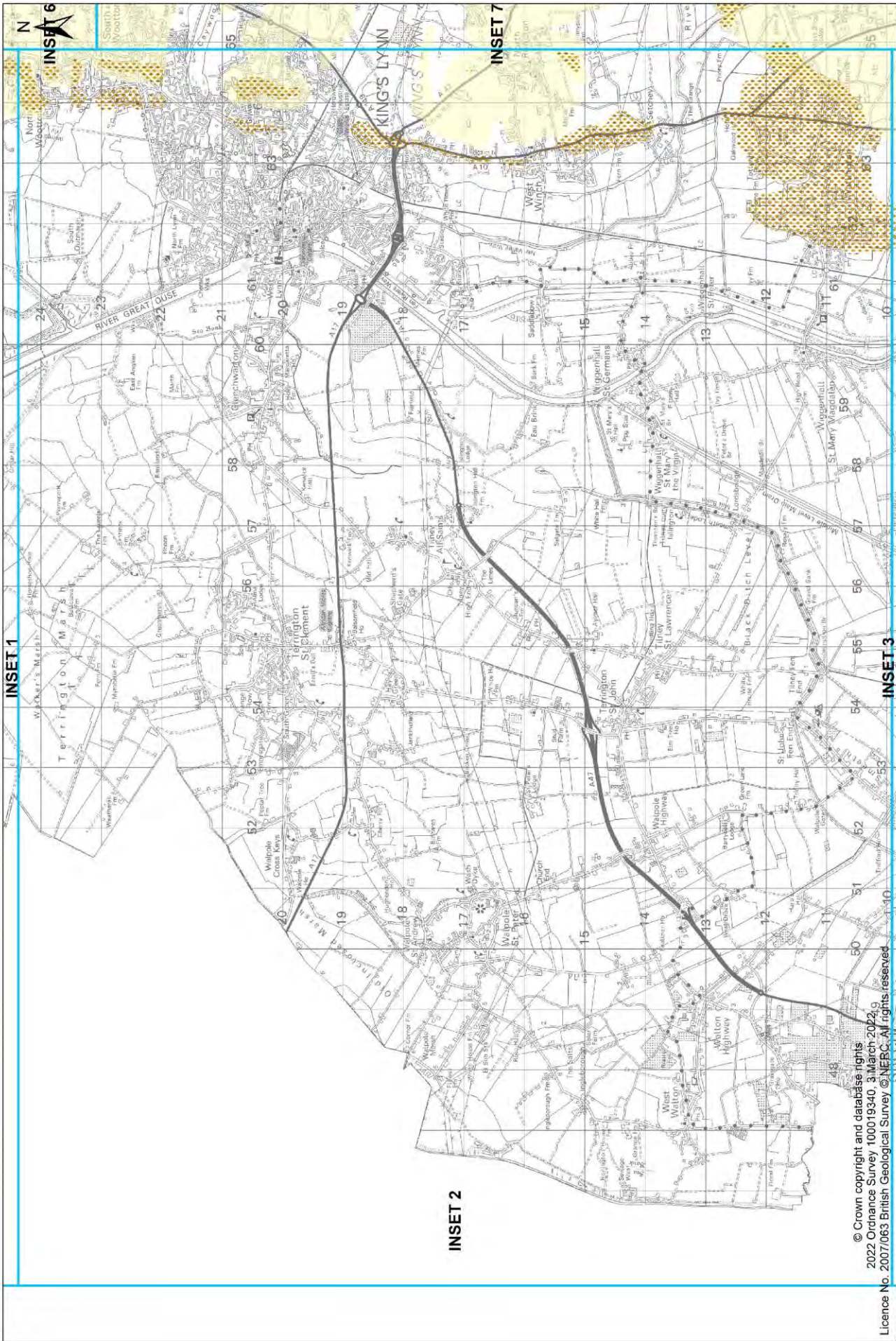
## Inset Maps 1-26: Mineral Safeguarding Areas

**Legend**

-  Mineral Safeguarding Area (Sand and Gravel)
-  Mineral Safeguarding Area (Carstone)
-  Mineral Safeguarding Area (Silica sand)



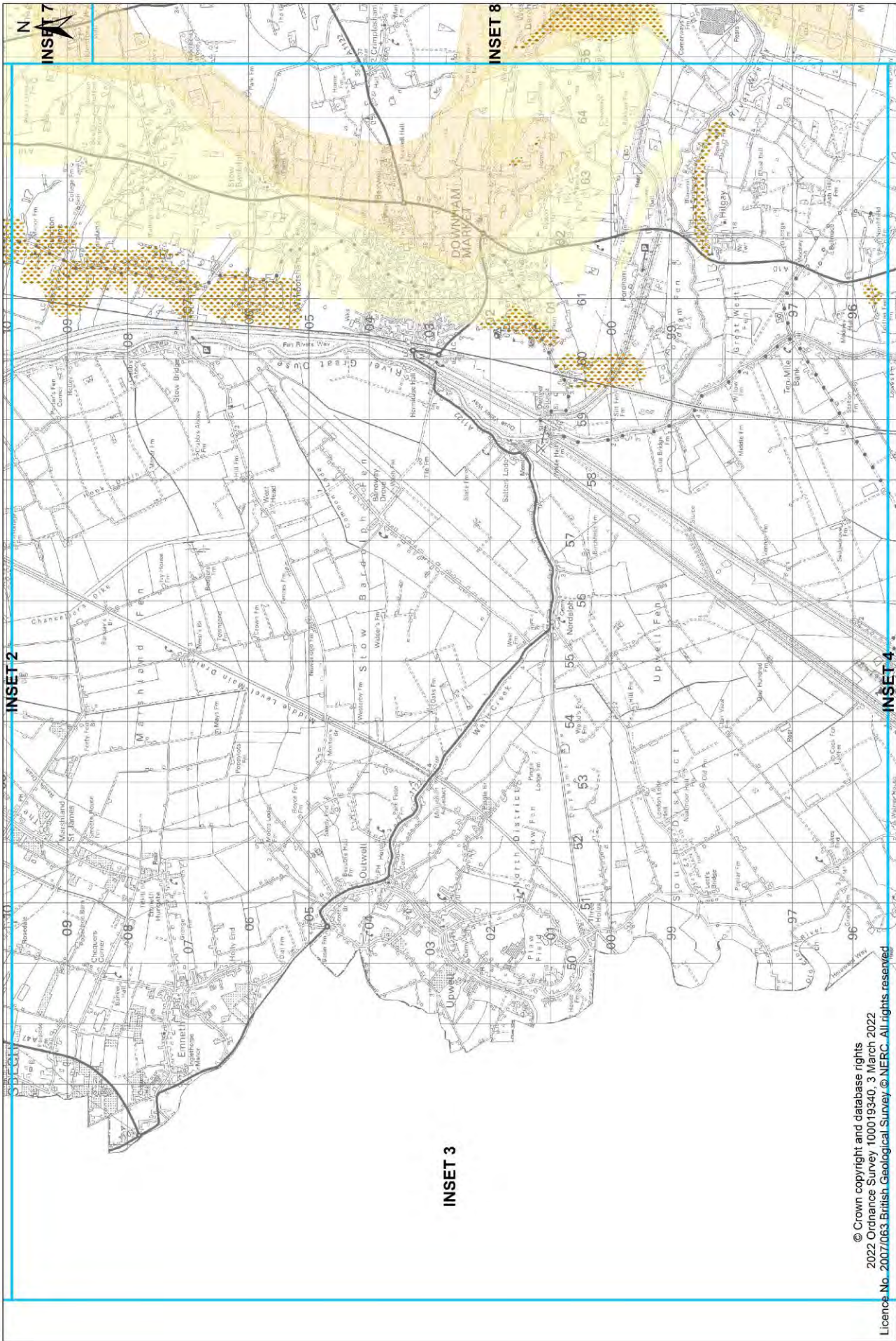




© Crown copyright and database rights  
 2022 Ordnance Survey 100019340. 3 March 2022.  
 Licence No. 2007/063 British Geological Survey © NERC. All rights reserved.

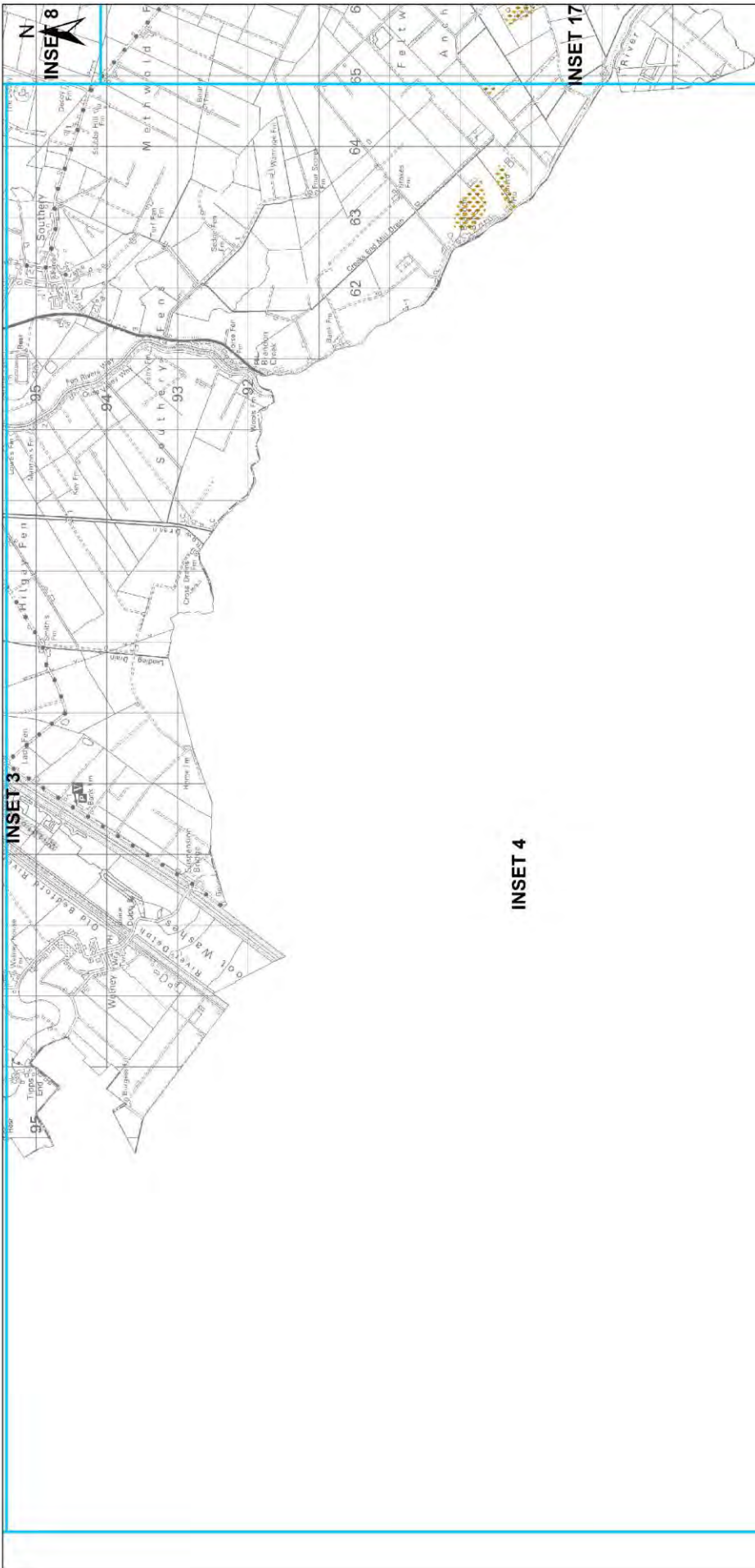






© Crown copyright and database rights  
 2022 Ordnance Survey 100019340, 3 March 2022  
 Licence No. 2007/063 British Geological Survey © NERC. All rights reserved

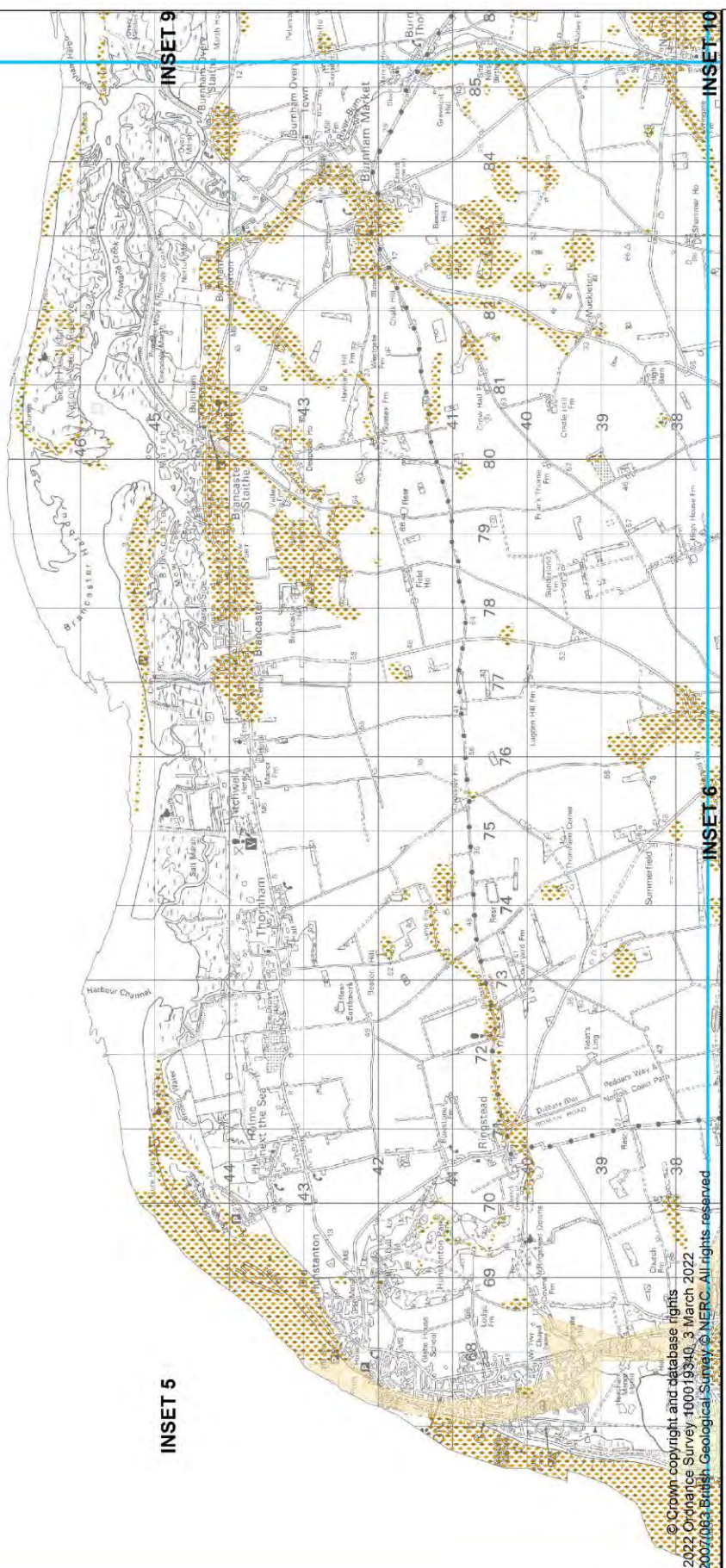




© Crown copyright and database rights  
 2022 Ordnance Survey 100019340, 3 March 2022  
 Licence No: 20077063 British Geological Survey © NERC. All rights reserved





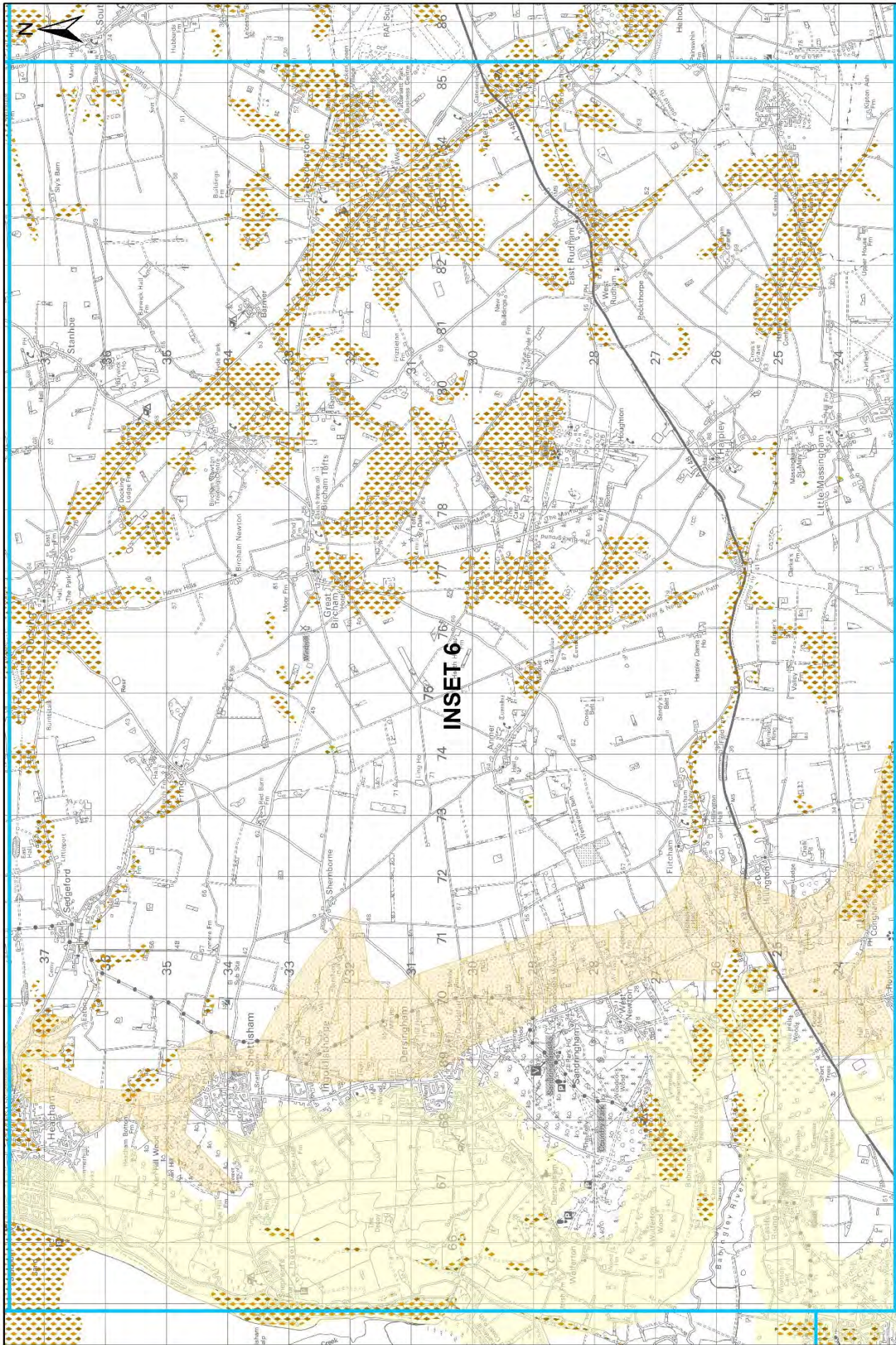


**INSET 1**

© Crown copyright and database rights  
 2022 Ordnance Survey 100019340, 3 March 2022  
 Licence No. 20007063 British Geological Survey © NERC. All rights reserved







**INSET 6**

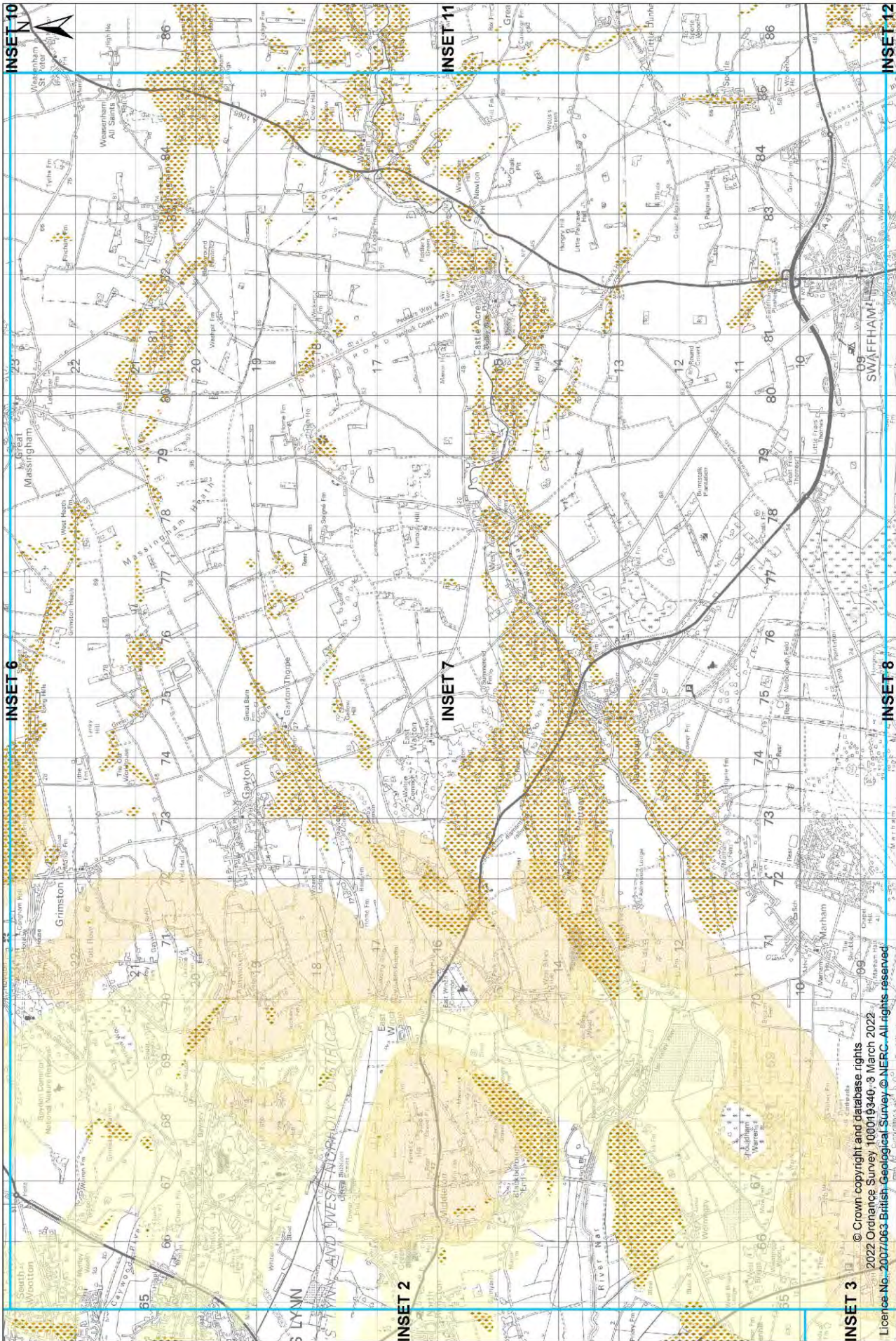
0 1,250 2,500 3,750 5,000 Metres



Norfolk County Council

Published: 2025

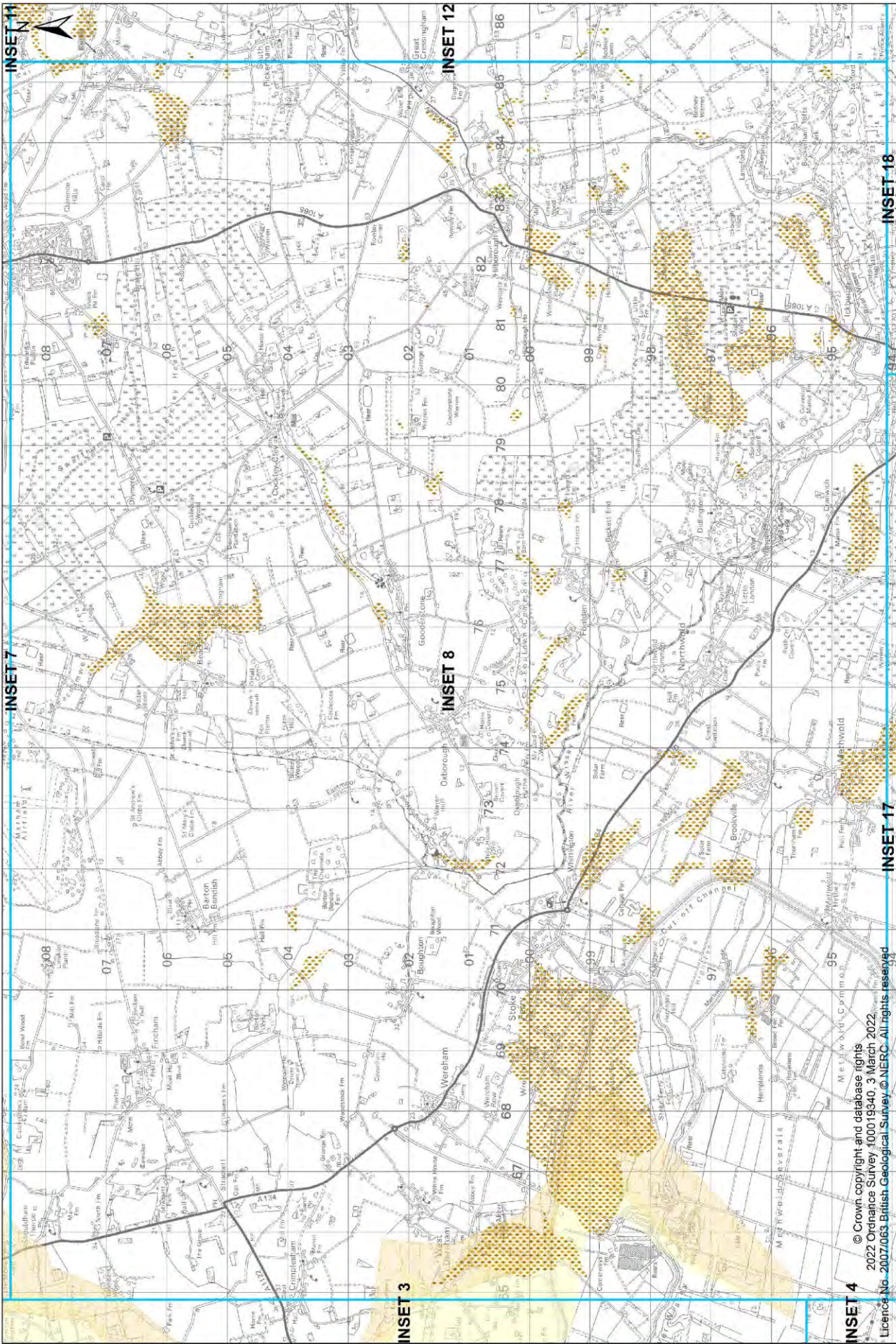




© Crown copyright and database rights  
2022 Ordnance Survey 100019340 - 3 March 2022  
Licence No. 2007/063 British Geological Survey © NERC. All rights reserved.

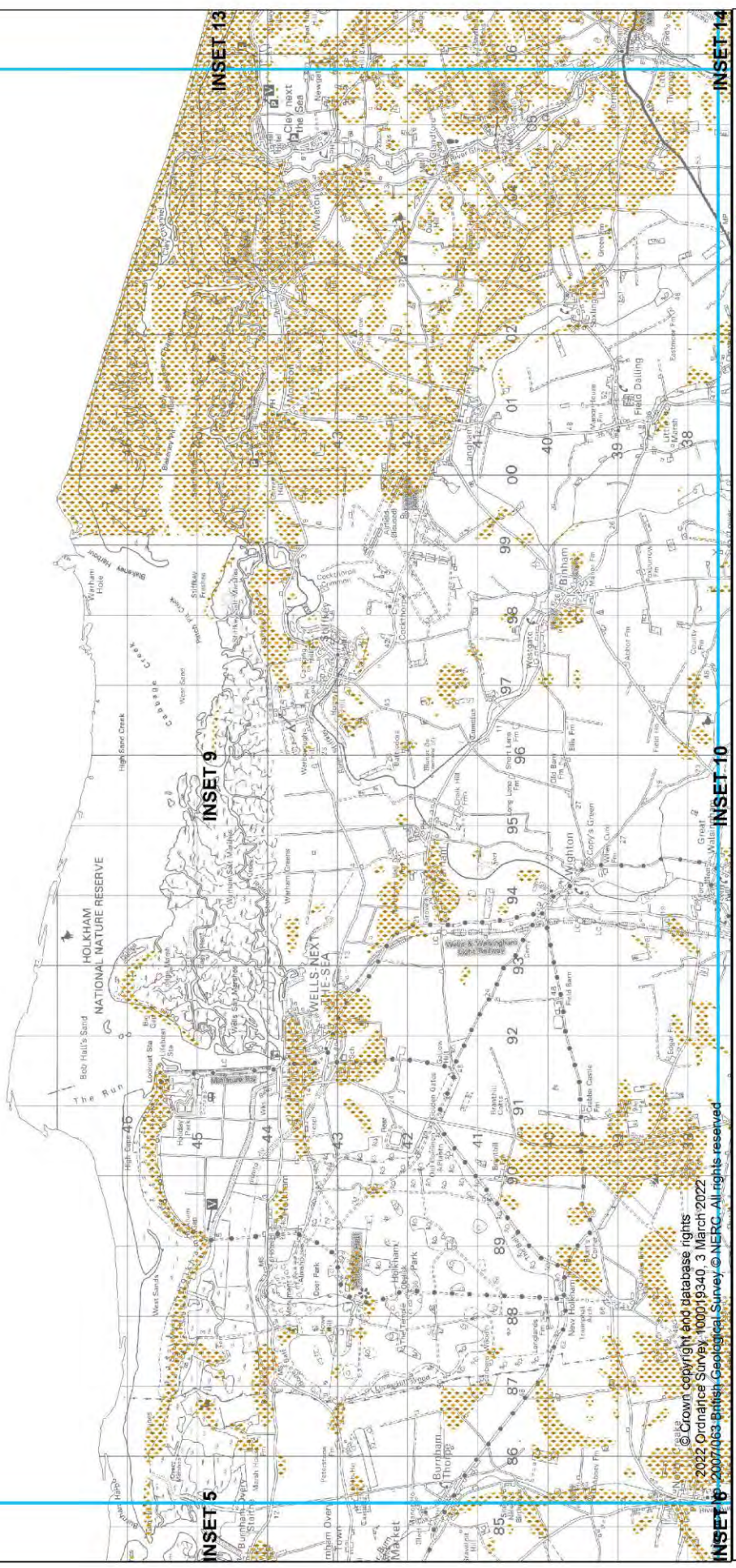




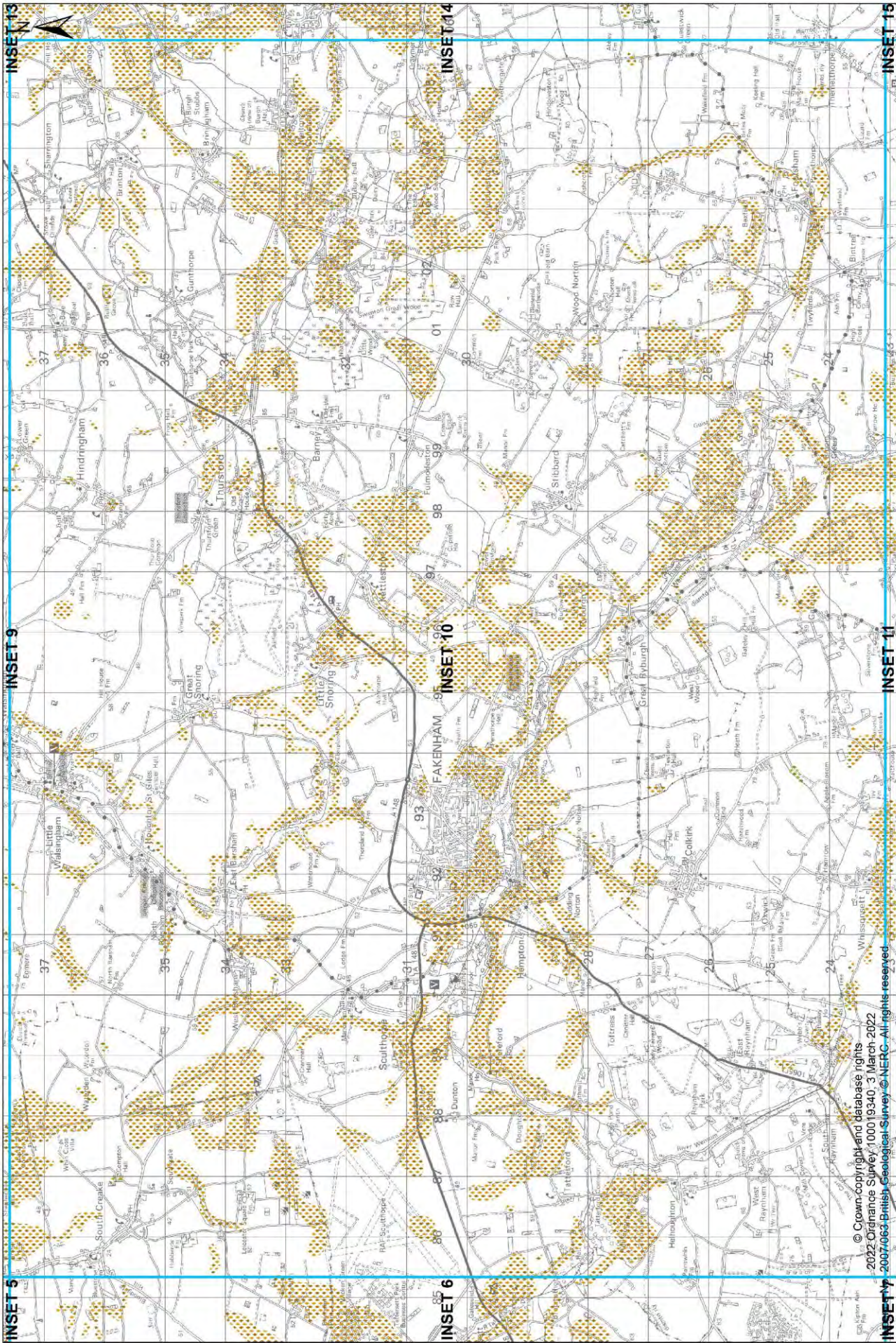


**INSET 4**  
© Crown copyright and database rights  
2022 Ordnance Survey 100019340, 3 March 2022  
Licence No. 2007/063 British Geological Survey © NERC. All rights reserved





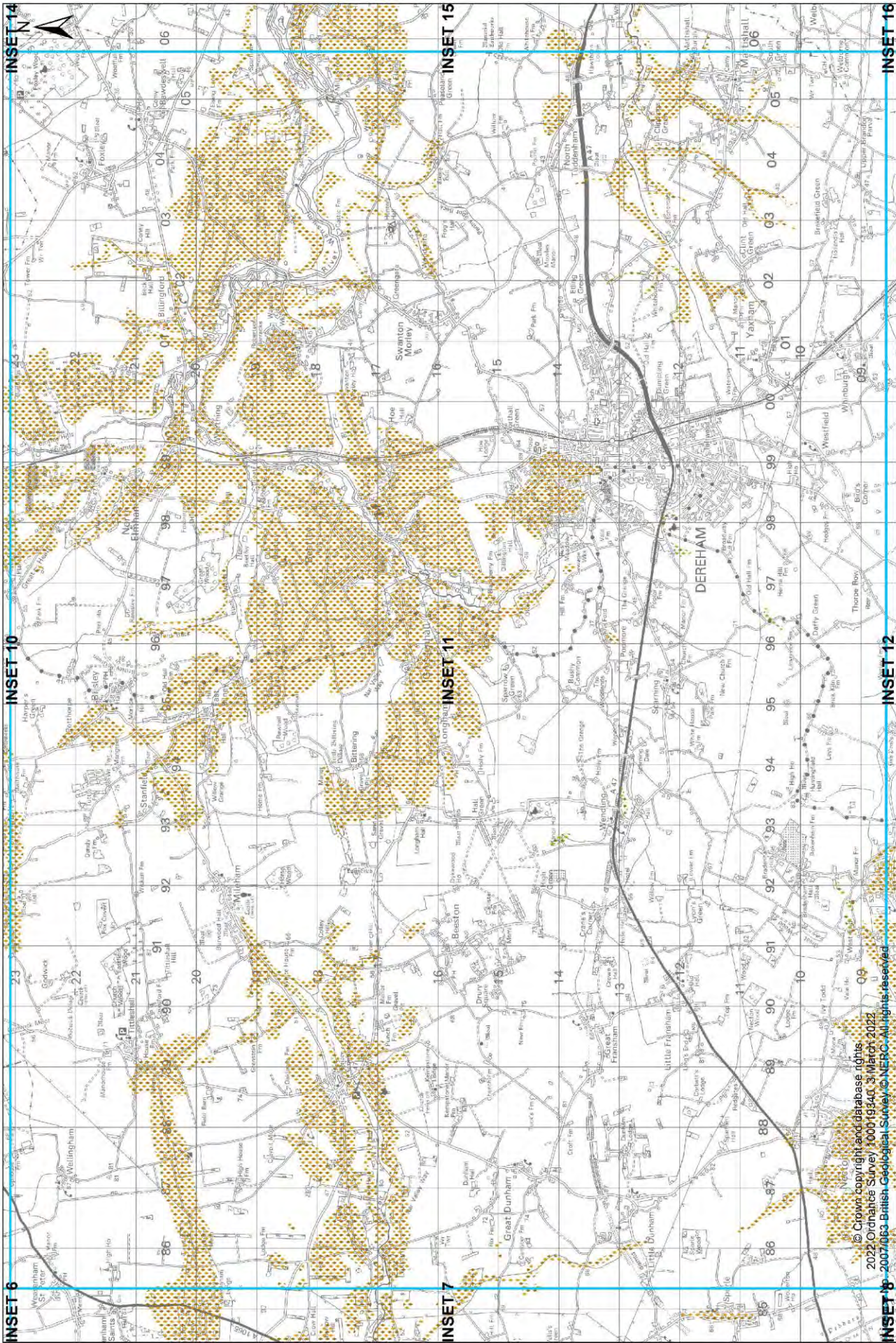




© Crown copyright and database rights  
 2022 Ordnance Survey 100019340 3 March 2022  
 2007/063 British Geological Survey © NERC. All rights reserved



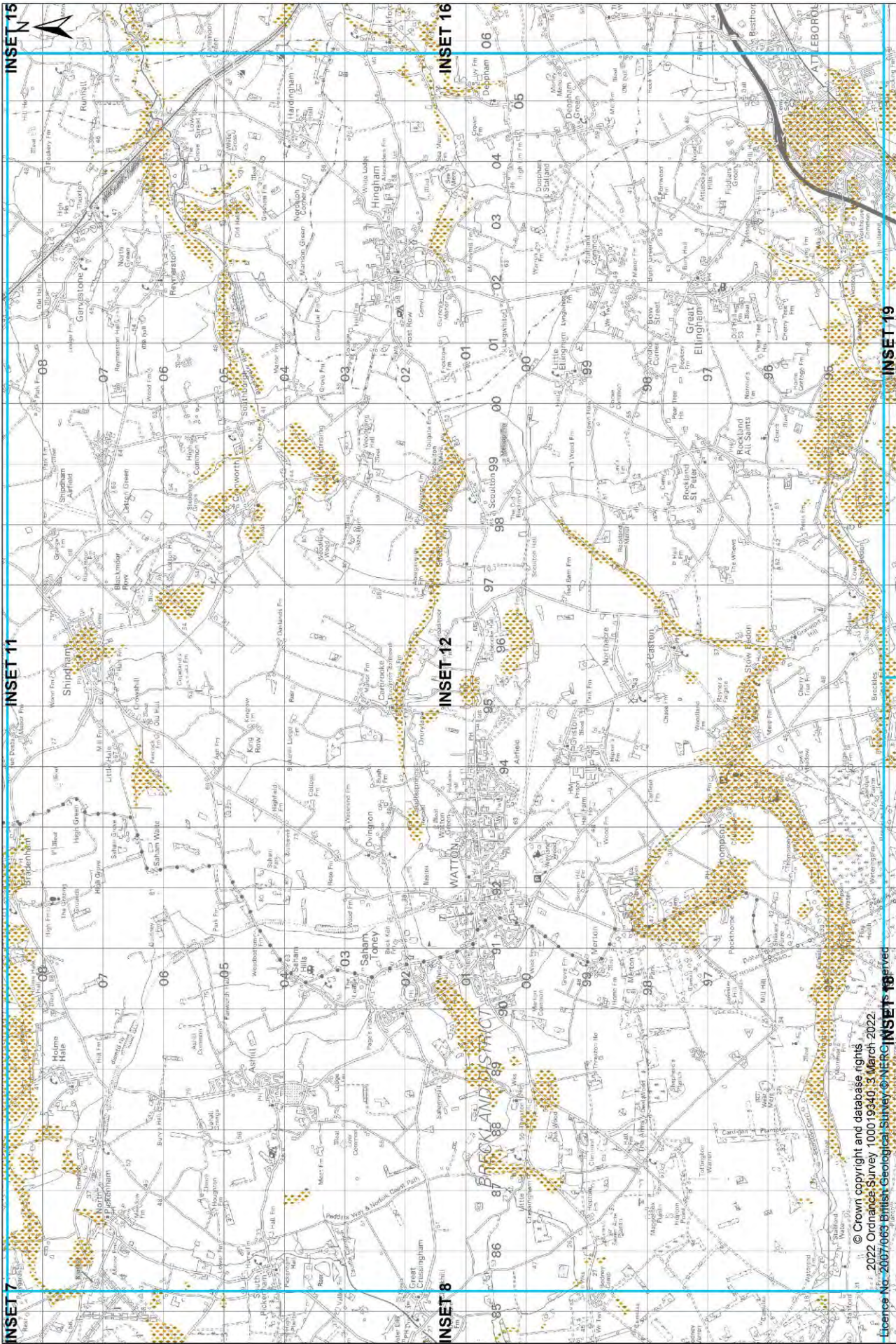




© Crown copyright and database rights  
2022 Ordnance Survey 100019340, 3 March 2022  
INSET 6 - 2007/063 British Geological Survey ©NERC. All rights reserved.

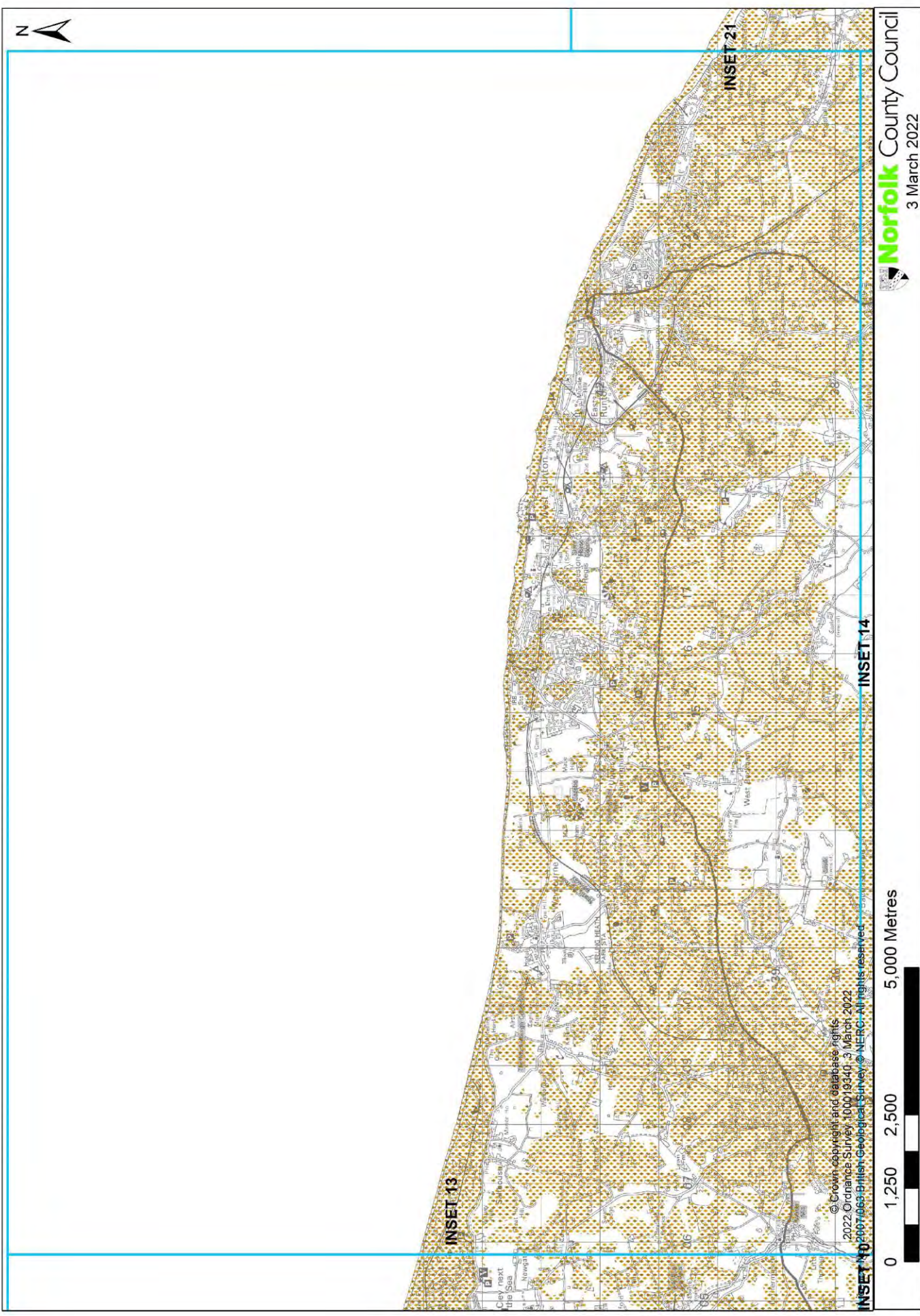
0 1,250 2,500 5,000 Metres



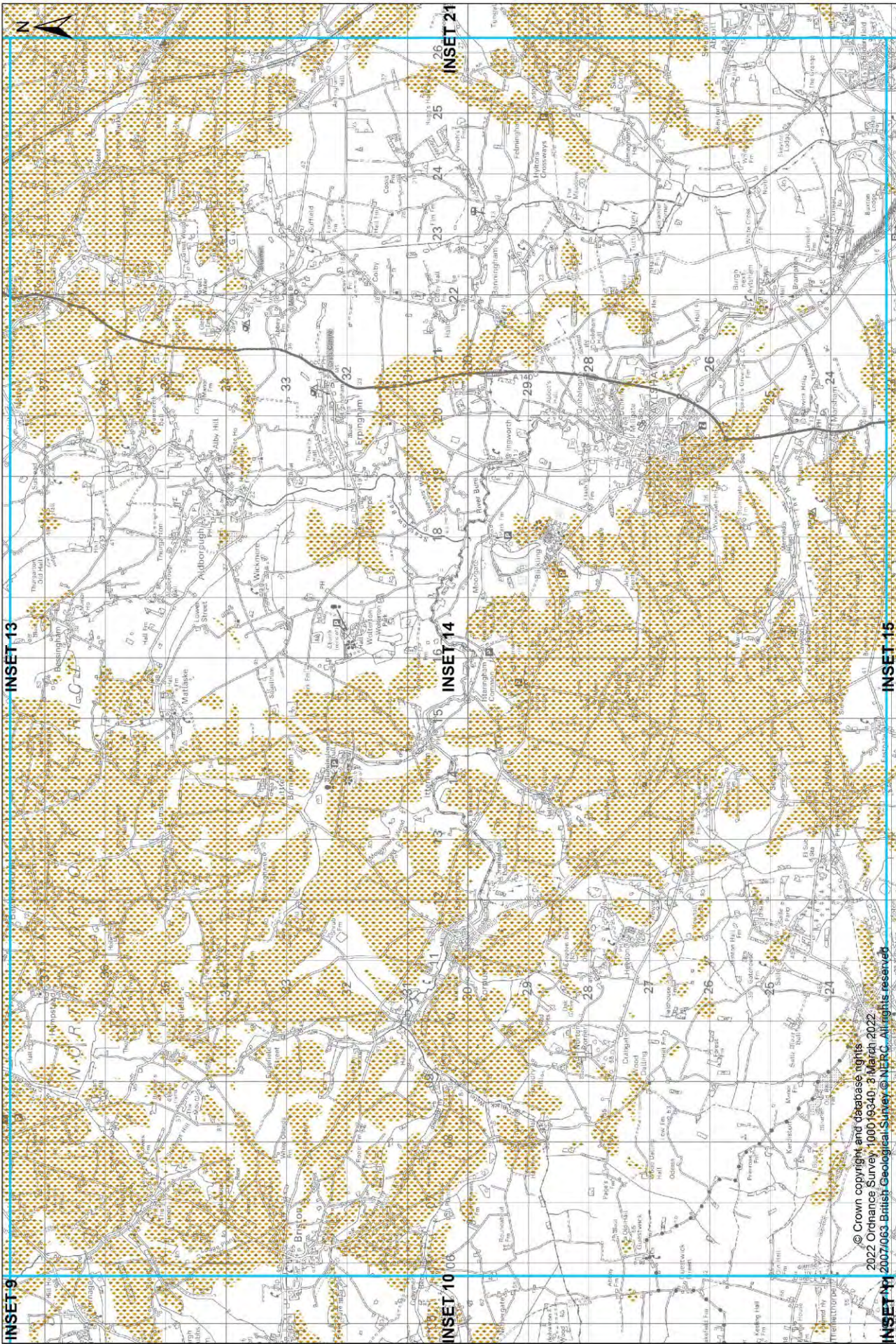


© Crown copyright and database rights  
2022 Ordnance Survey 100019340, 3 March 2022.  
Licence No. 2007/063 British Geological Survey © NERC. INSET 19 served



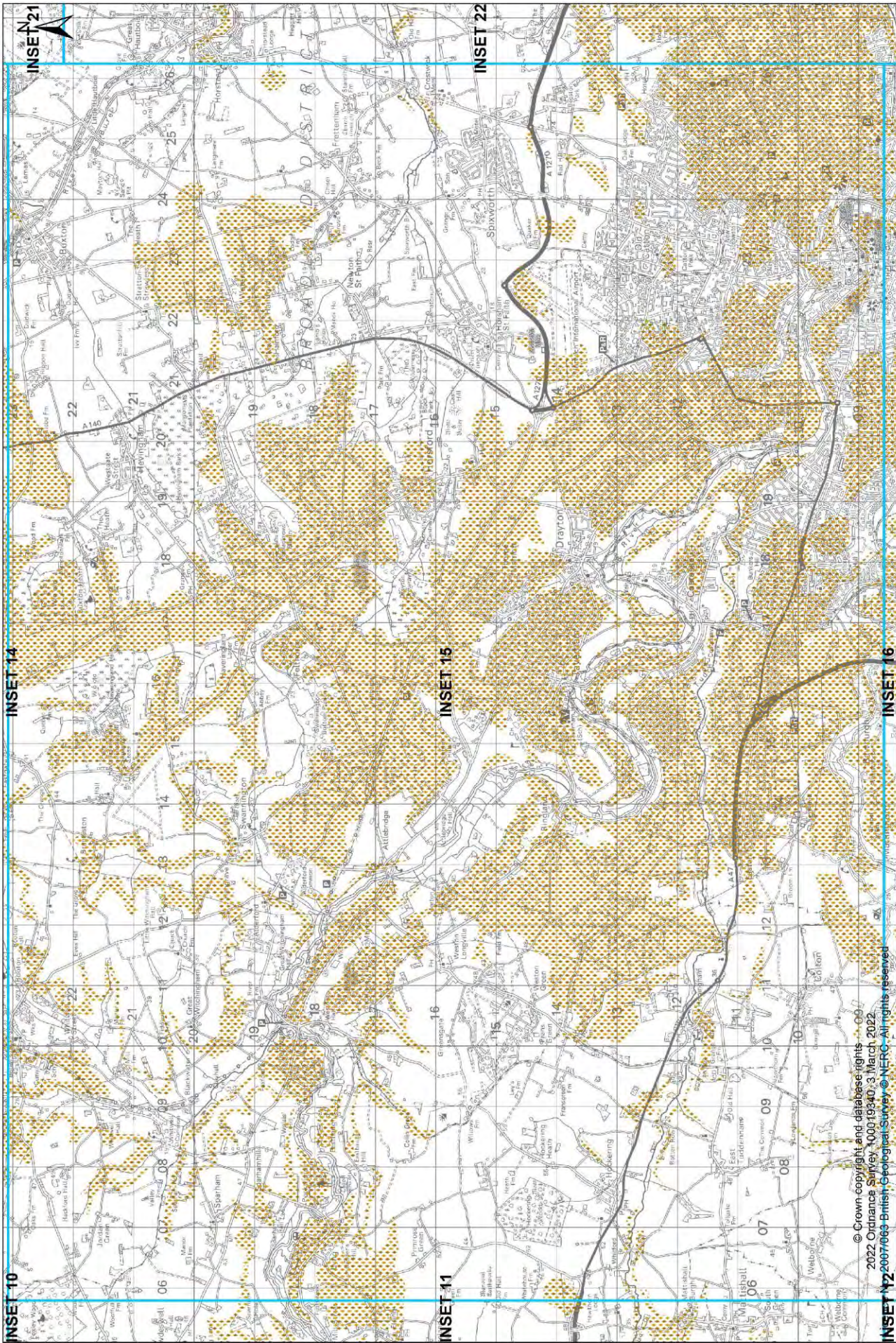






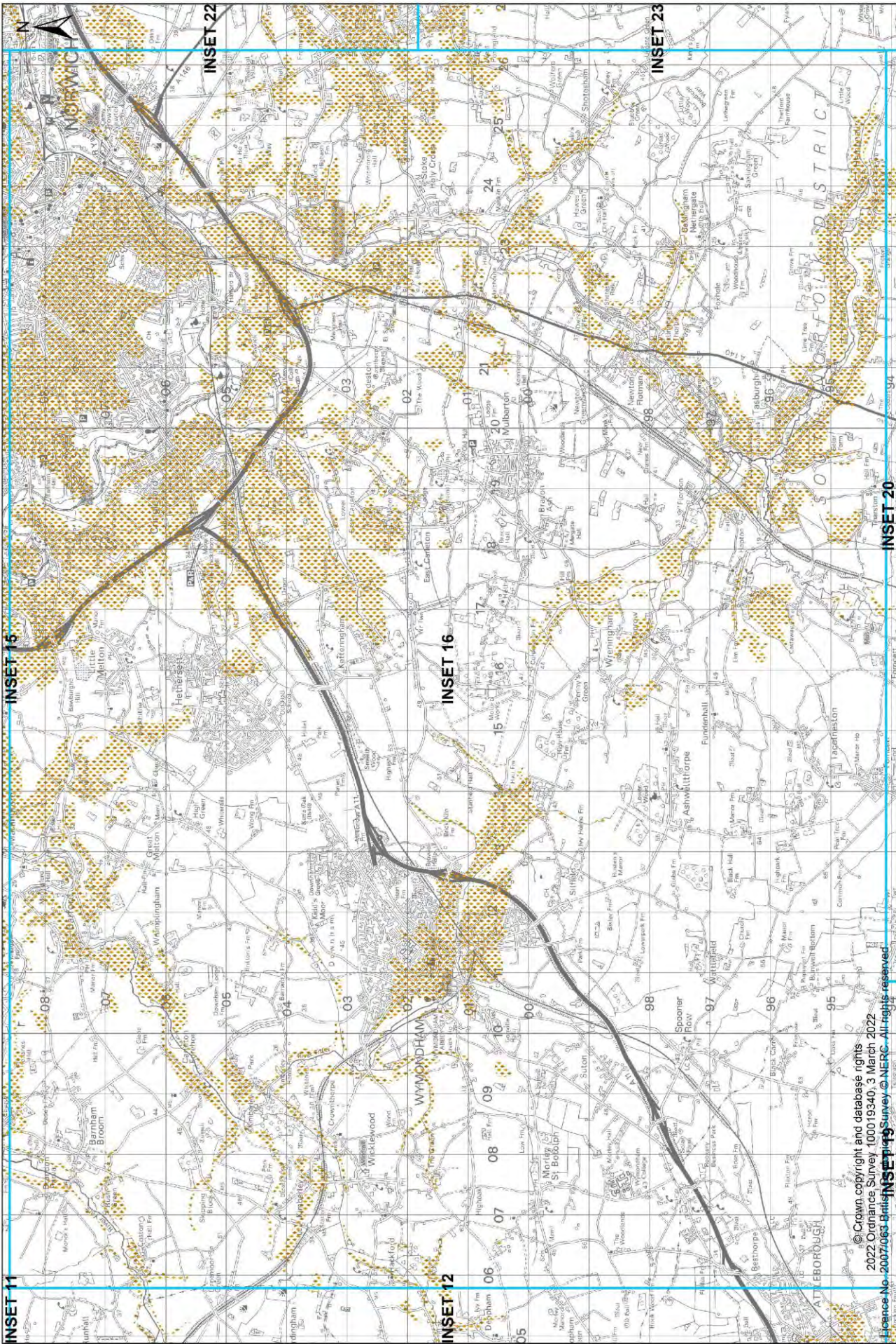
© Crown copyright and database rights  
2022 Ordnance Survey 100019340, 3 March 2022  
2007/063 British Geological Survey © NERC. All rights reserved





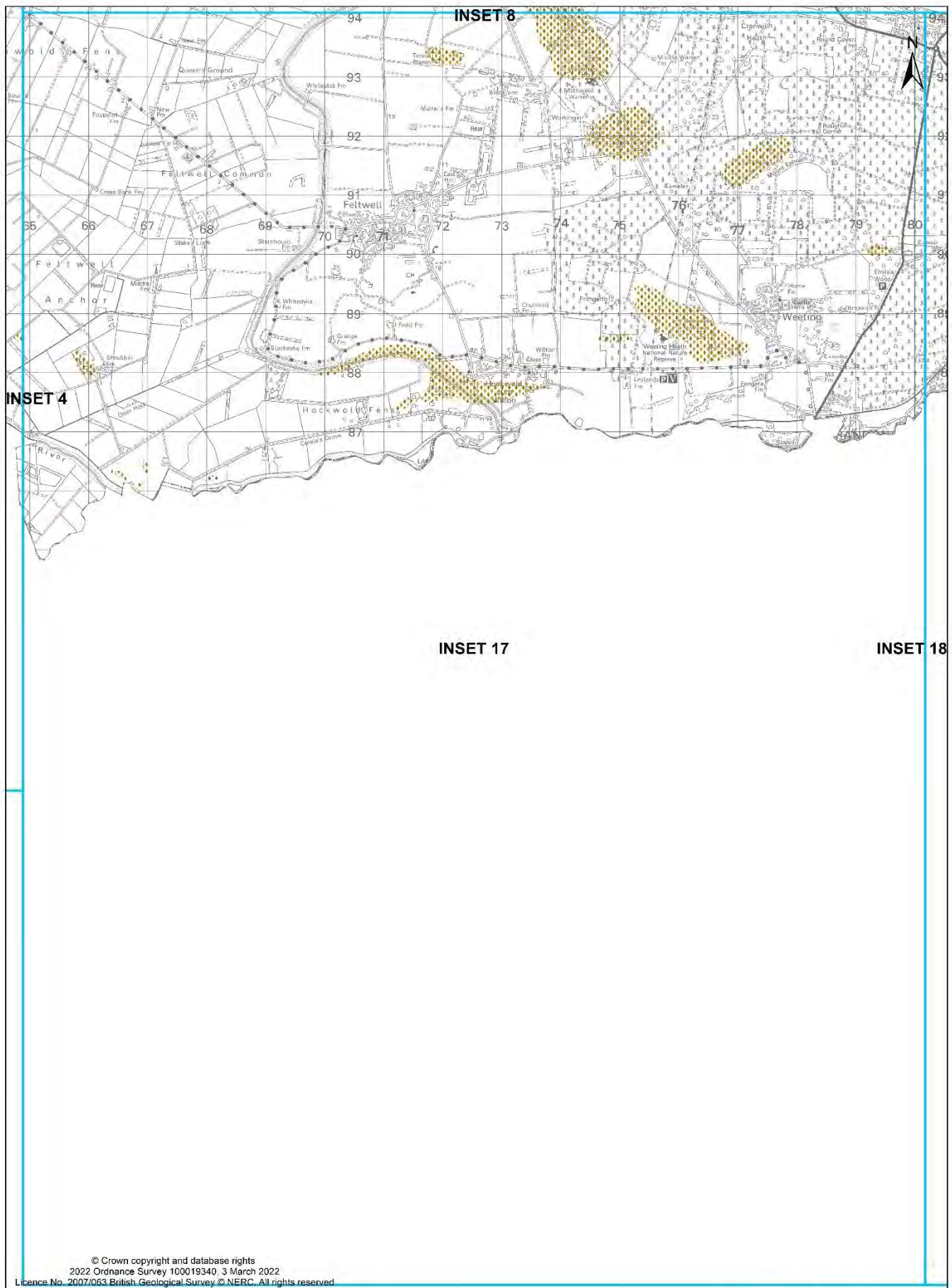
© Crown copyright and database rights 00  
 2022 Ordnance Survey 100019340 3 March 2022  
 INSET 12 2007063 British Geological Survey © NERC. All rights reserved



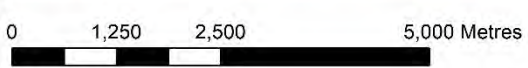


© Crown copyright and database rights  
2022 Ordnance Survey 100019340, 3 March 2022  
Licence No. 2007/063 British Survey © NERC. All rights reserved.

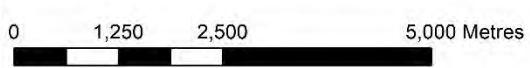
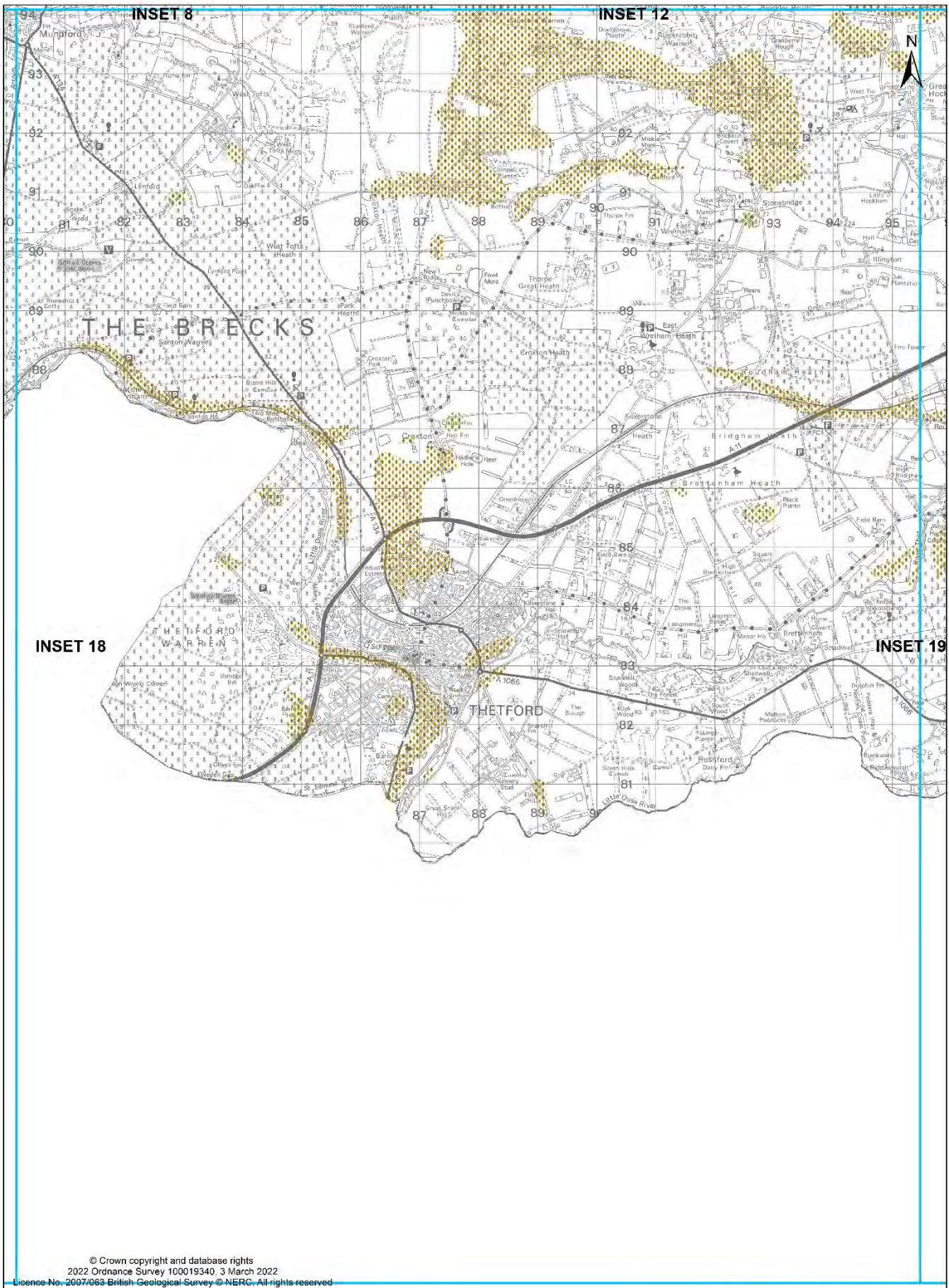




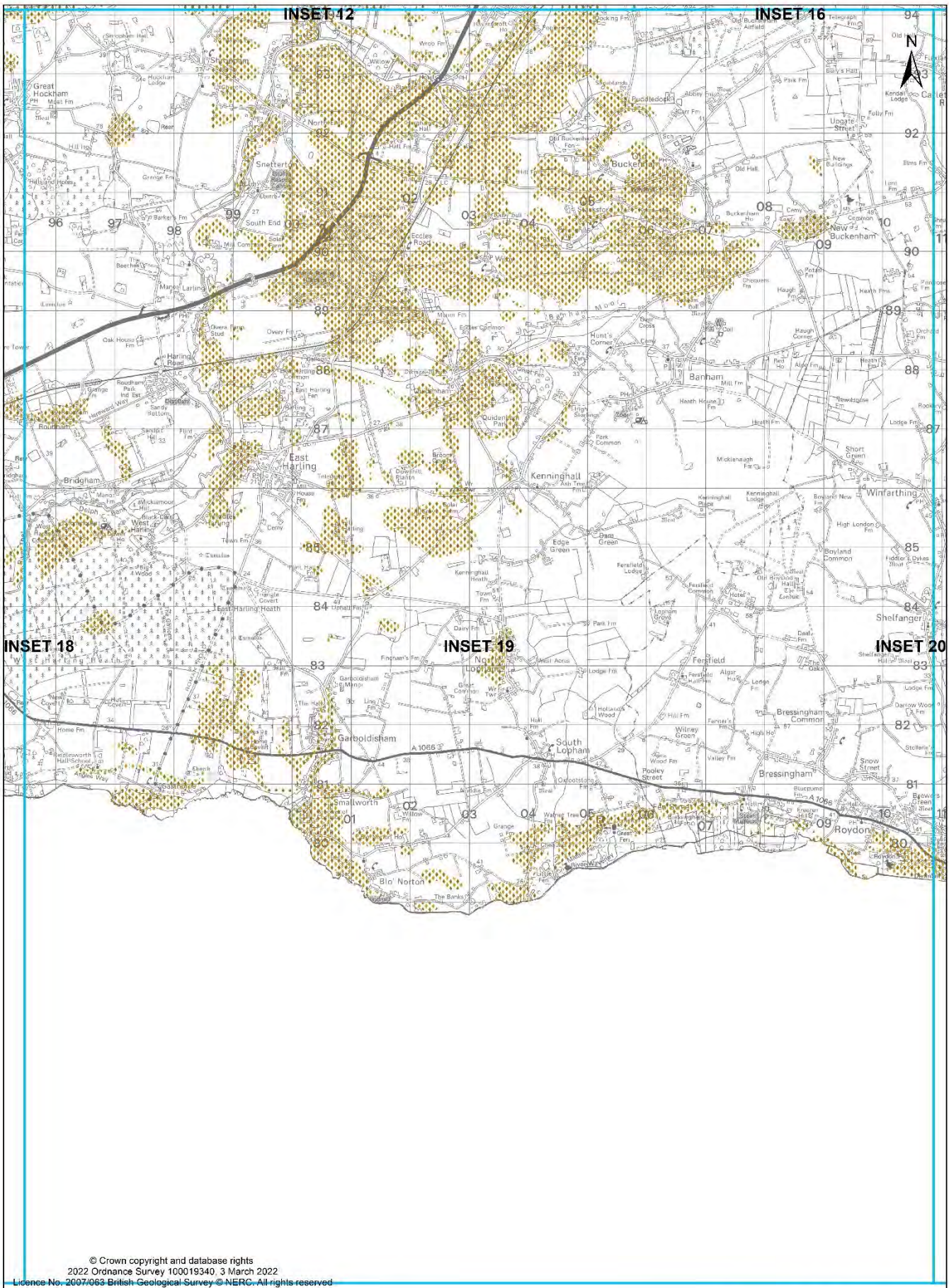
© Crown copyright and database rights  
 2022 Ordnance Survey 100019340, 3 March 2022  
 Licence No. 2007/063 British Geological Survey © NERC. All rights reserved



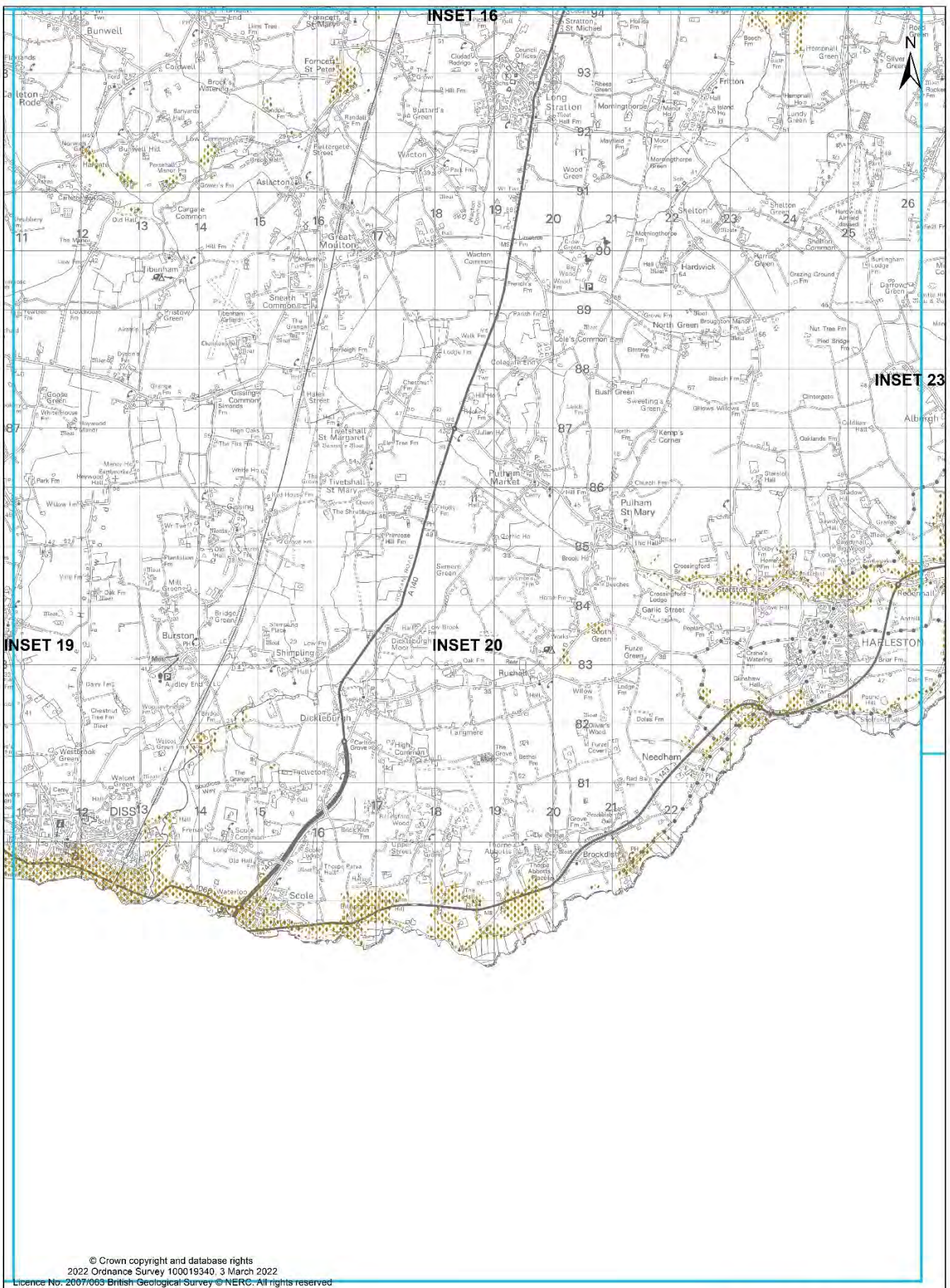




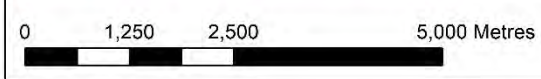




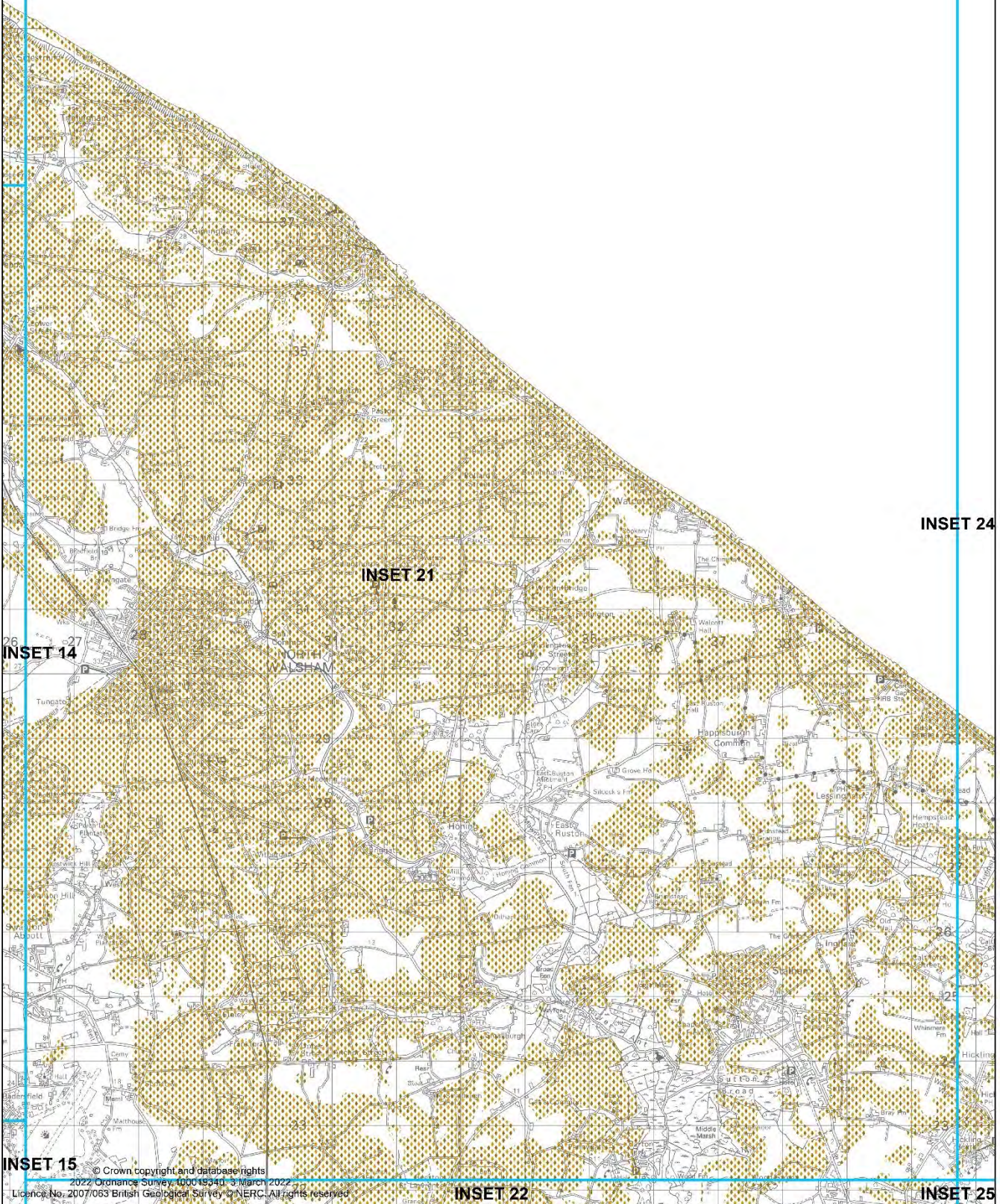




© Crown copyright and database rights  
 2022 Ordnance Survey 100019340, 3 March 2022  
 Licence No: 2007/069 British Geological Survey © NERC. All rights reserved



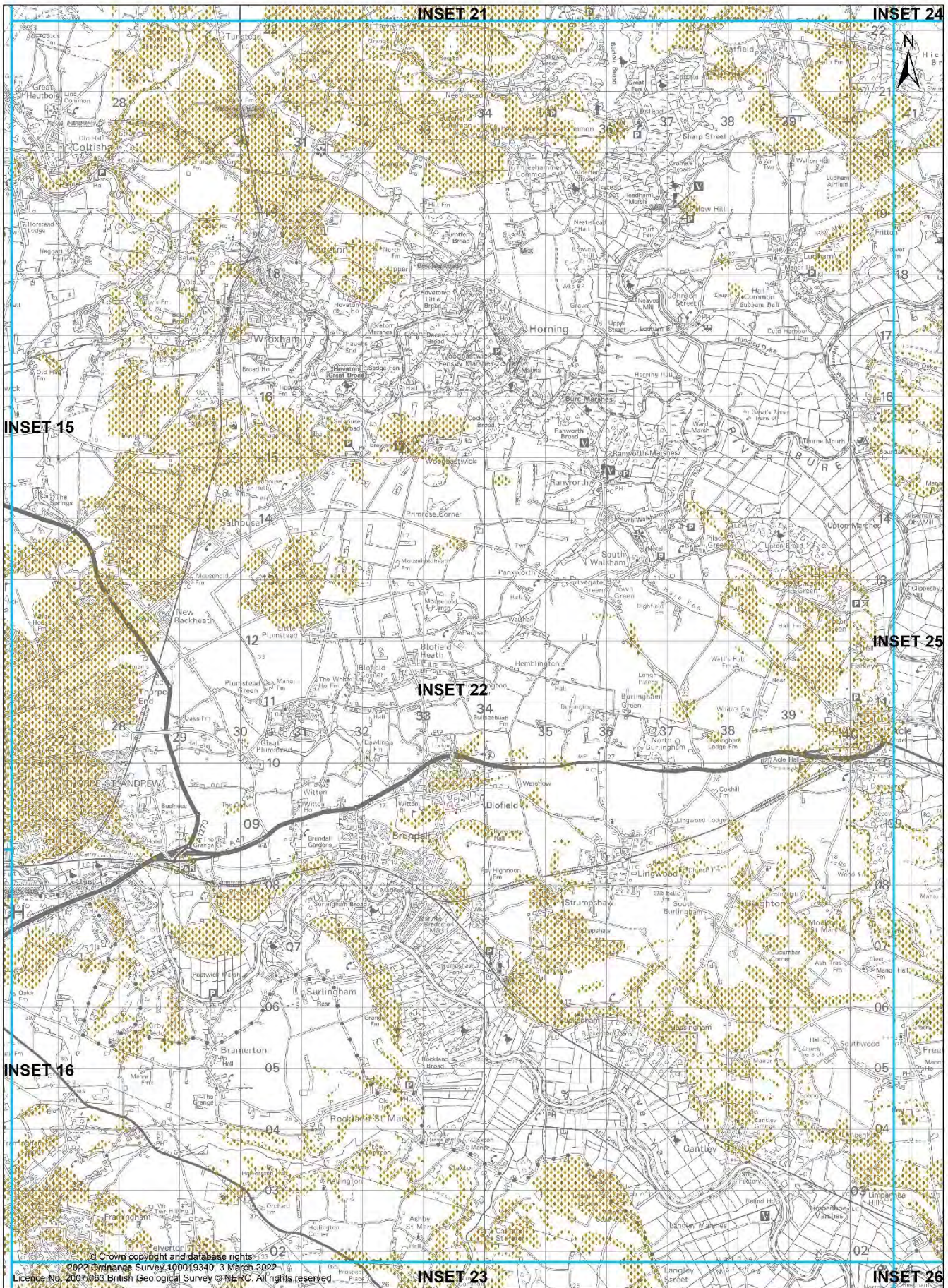




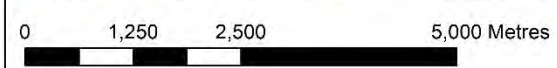
0 1,250 2,500 5,000 Metres

 **Norfolk** County Council  
3 March 2022

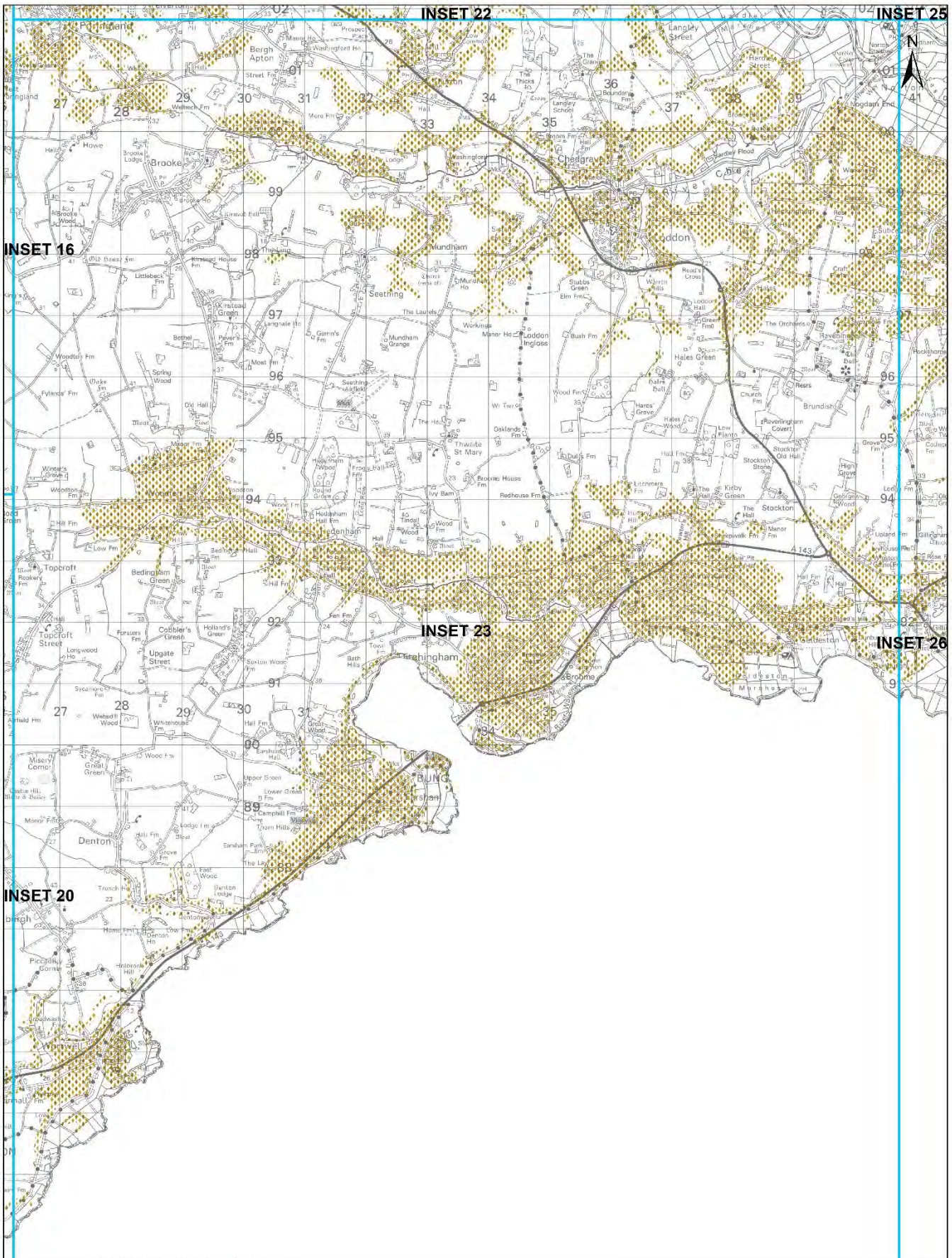




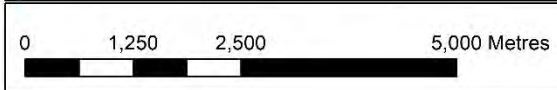
© Crown copyright and database rights  
 2022 Ordnance Survey 100019340: 3 March 2022  
 Licence No. 20070653 British Geological Survey © NERC. All rights reserved.







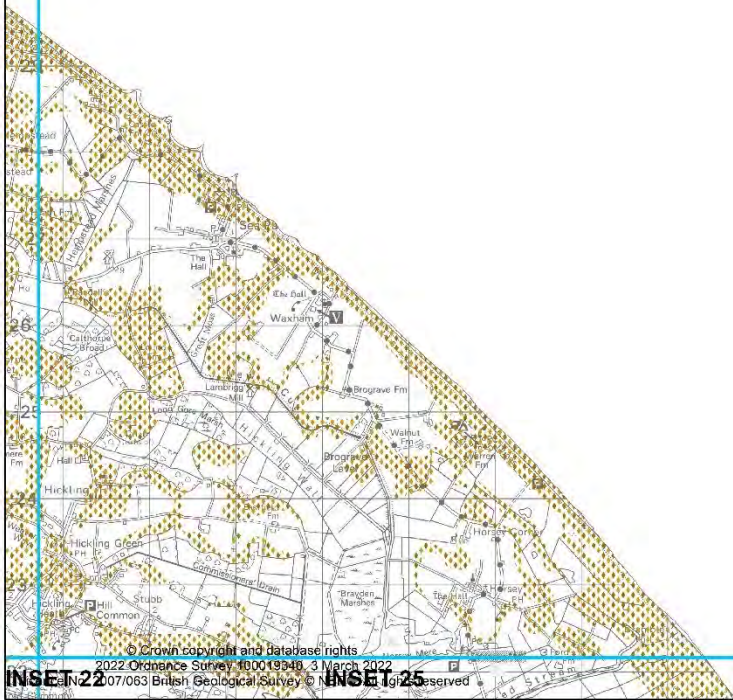
© Crown copyright and database rights  
 2022 Ordnance Survey 100019340. 3 March 2022  
 Licence No. 2007/063 British Geological Survey © NERC. All rights reserved



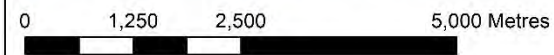


INSET 21

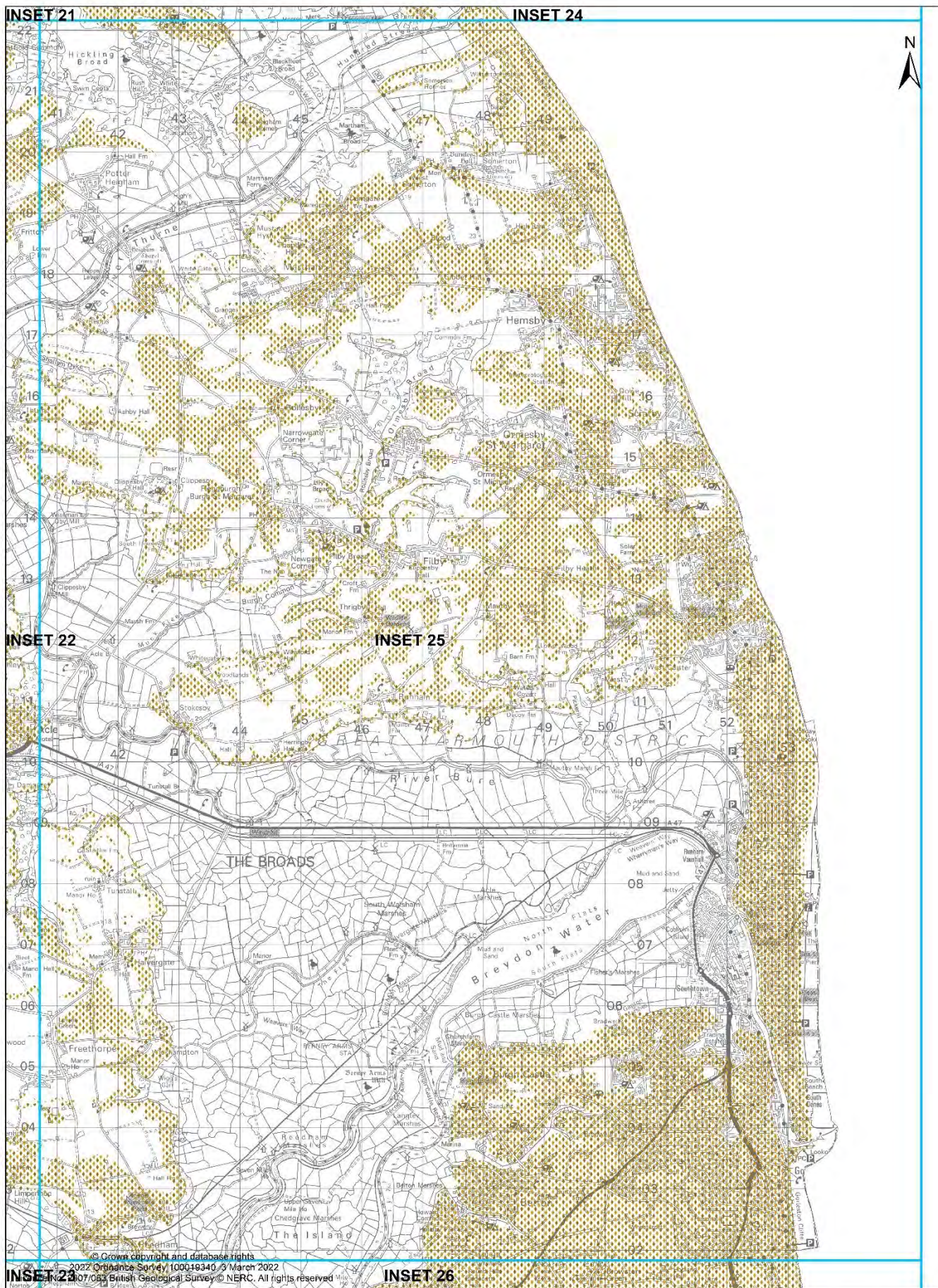
INSET 24



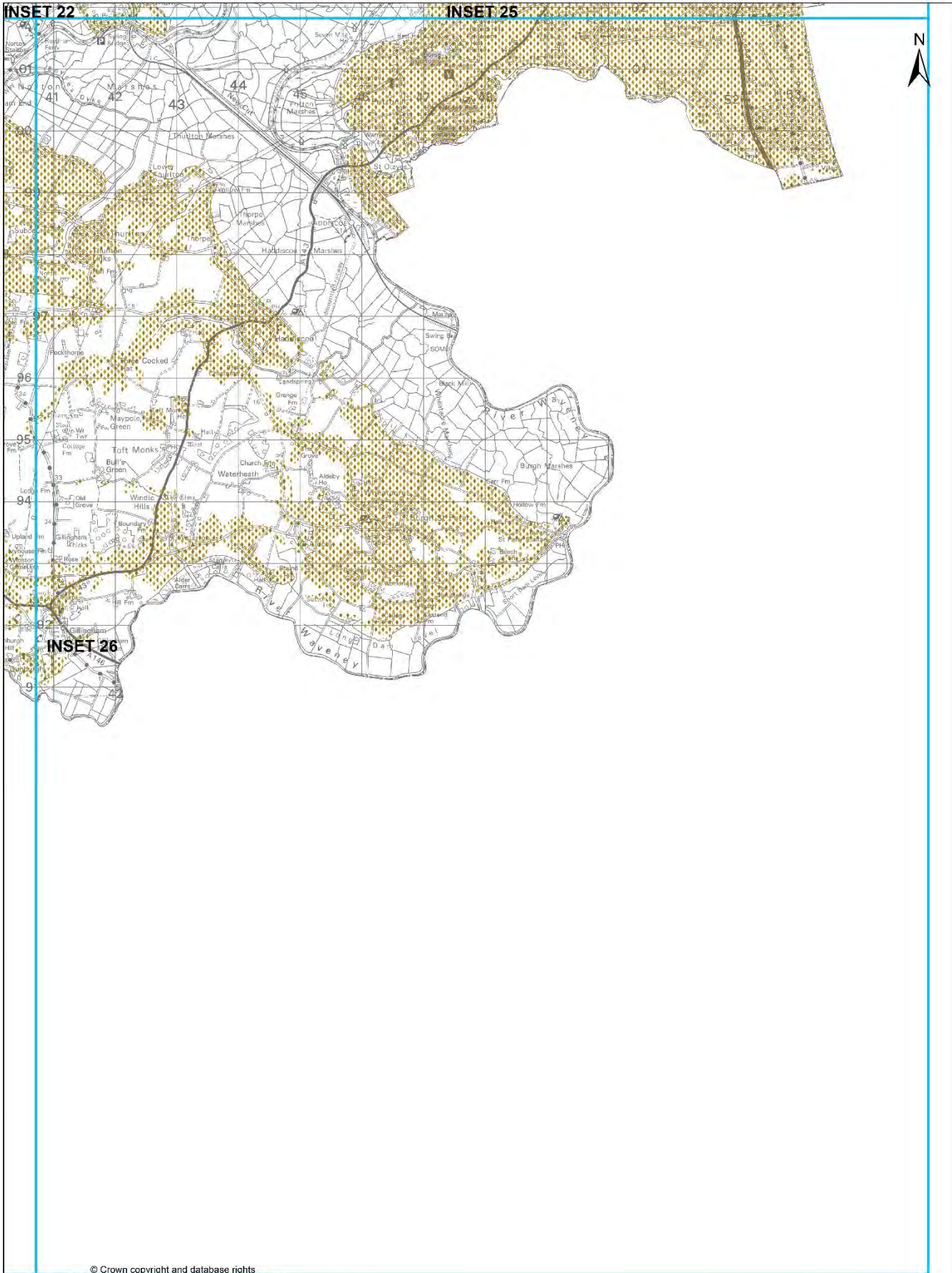
© Crown copyright and database rights  
2022 Ordnance Survey 100019949, 31 March 2022  
OSN 07/063 British Geological Survey © 2022. All rights reserved











© Crown copyright and database rights  
 2022 Ordnance Survey 100019340; 3 March 2022  
 Licence No. 2007/063 British Geological Survey © NERC. All rights reserved

